

How To Make and Apply A Binding

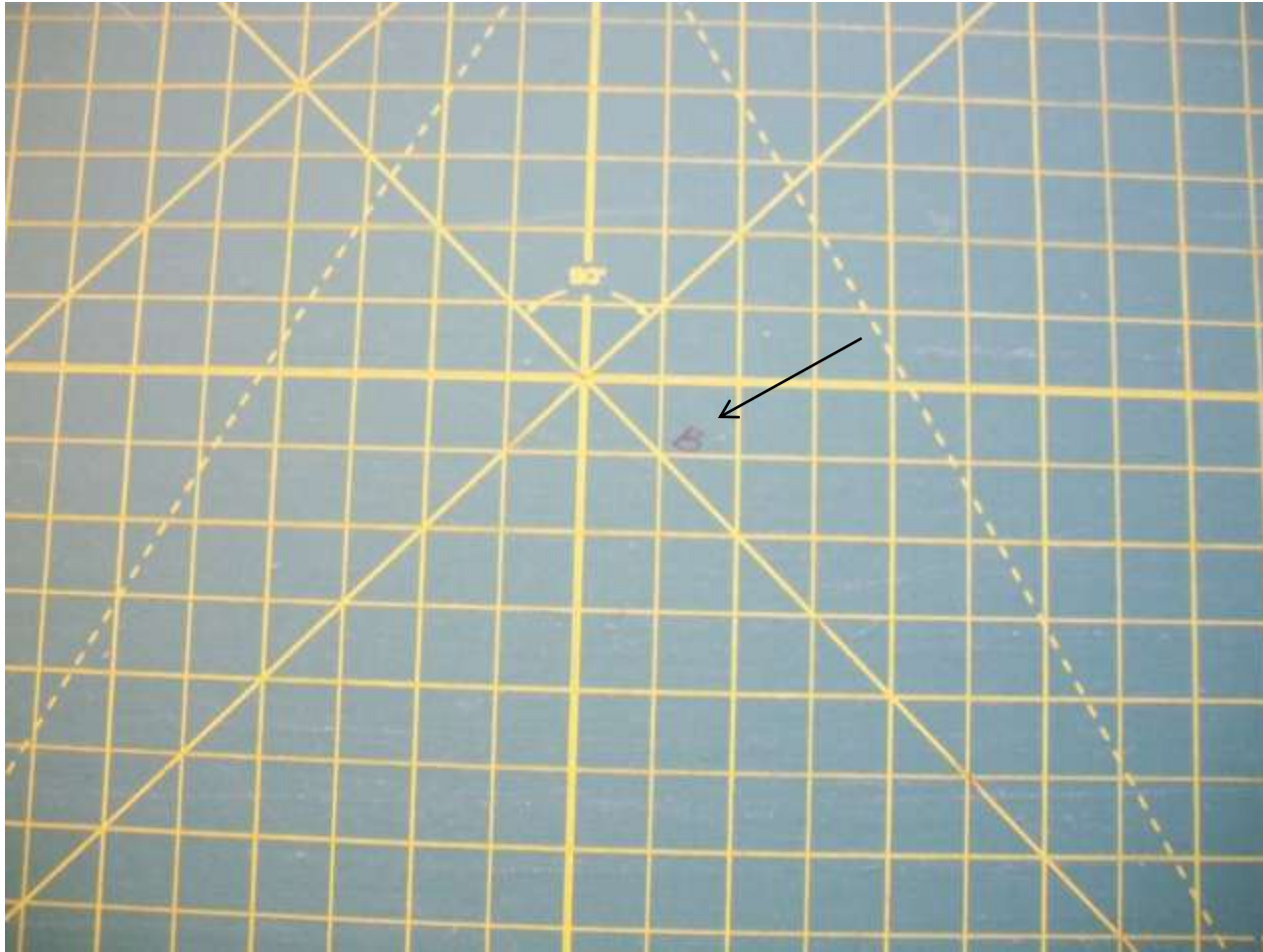
(The easy way.)

Copyright by Heather Spence Designs © 2011

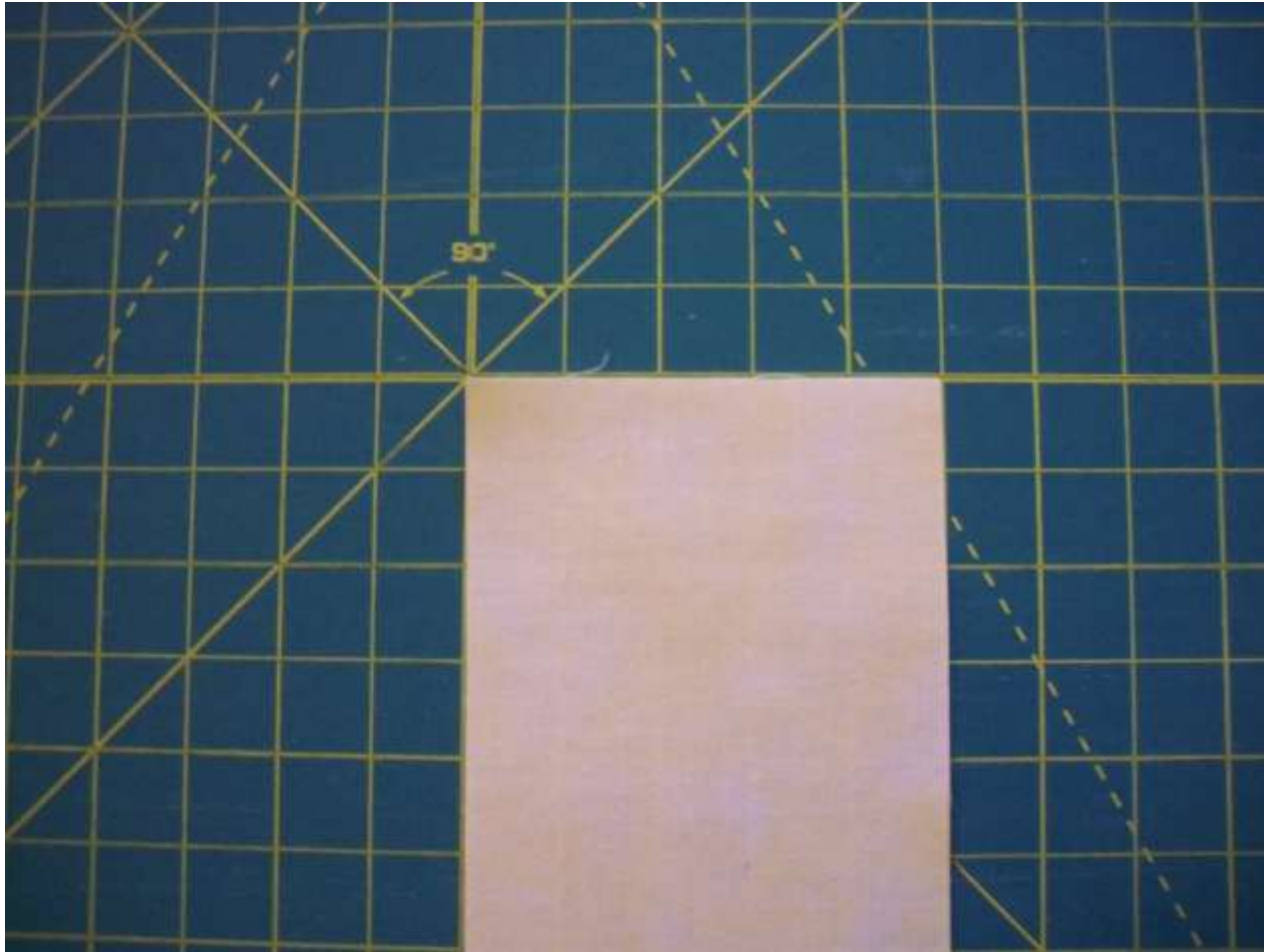
Start by trimming the extra batting and backing 1" from raw edge of top.



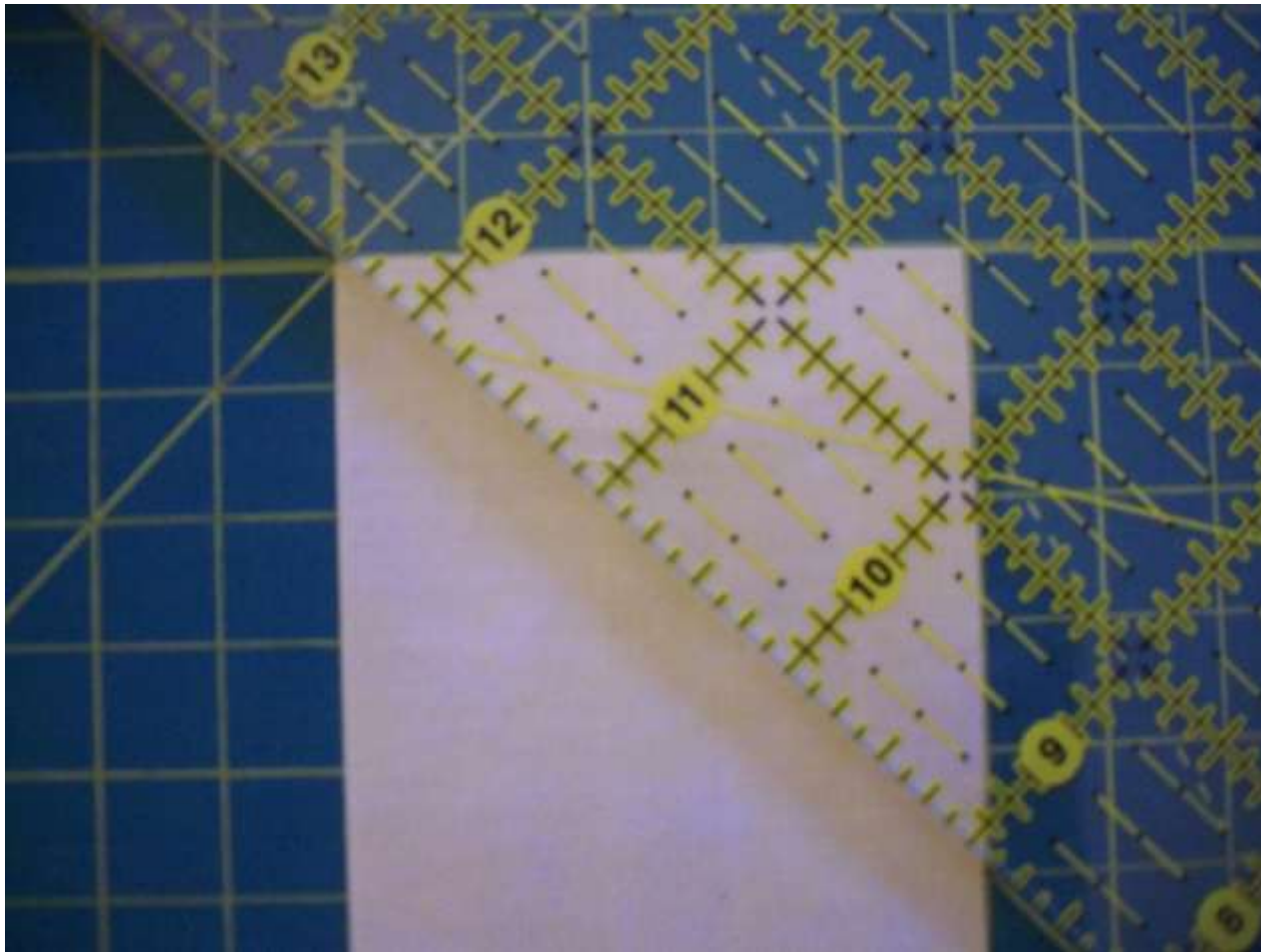
Next mark this line on your mat with a
'B' for binding.



Line up your 2.5" strip, right side down with the 90 degree lines on your mat.



Line your ruler up next to, leaving a pen tip away from, the diagonal line running from your upper left to your bottom right.



Draw the diagonal line. Repeat for each strip except the last one.



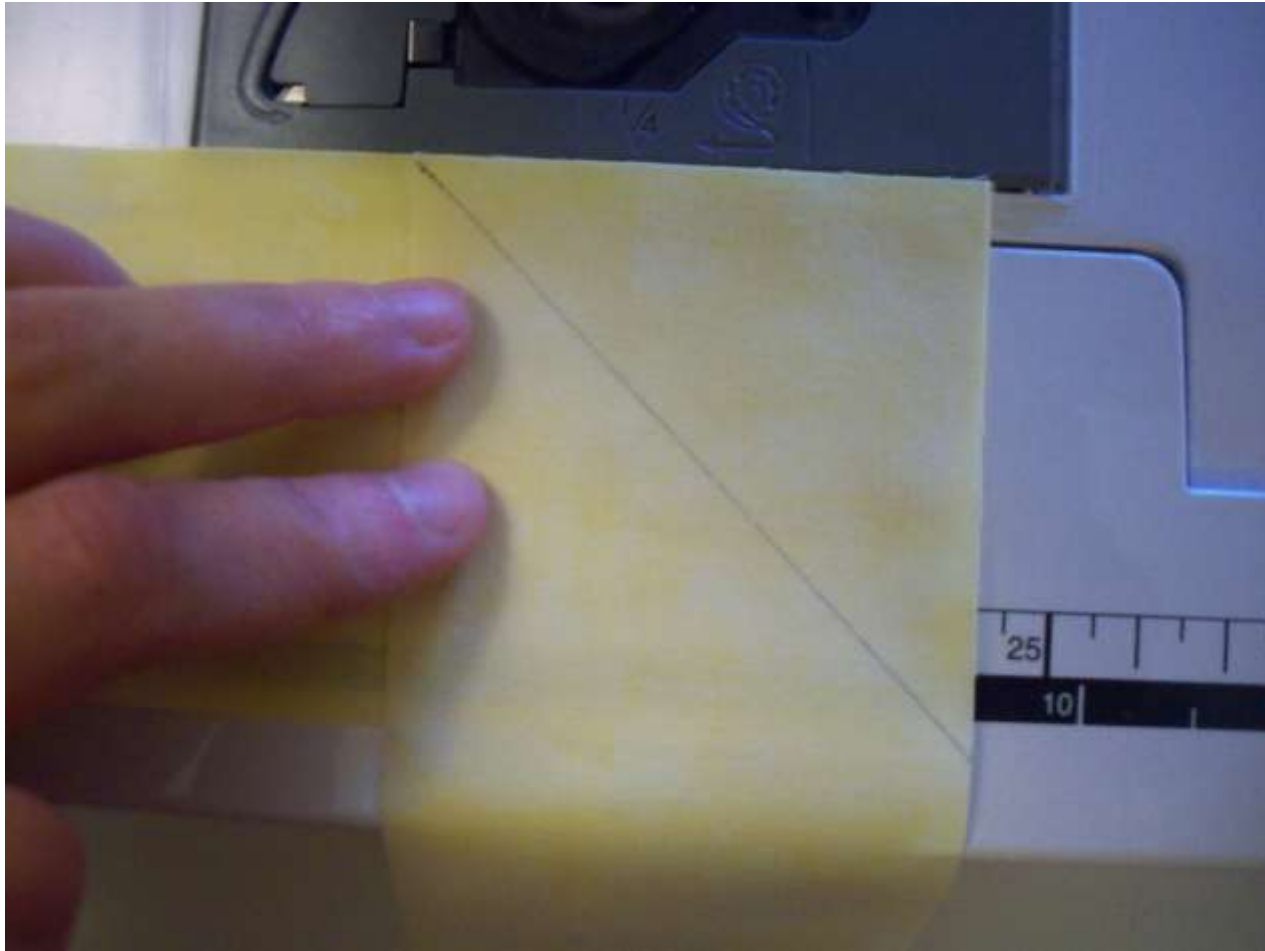
The last strip is left unmarked.



Place the unmarked strip, right side up, on the bed of your machine.



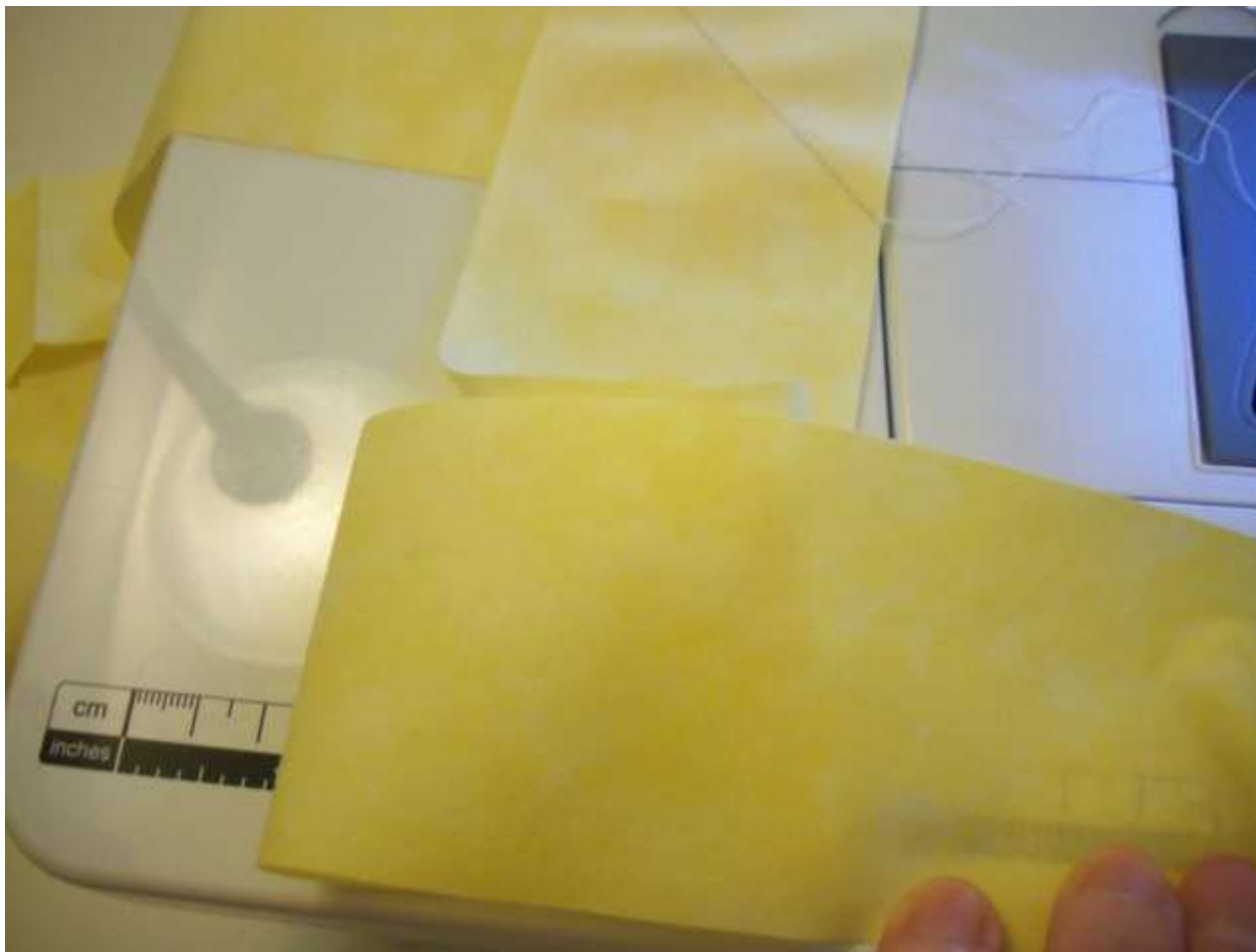
Lay the first marked strip on top of the “naked” strip, right side down, at a 90 degree angle to the first strip.



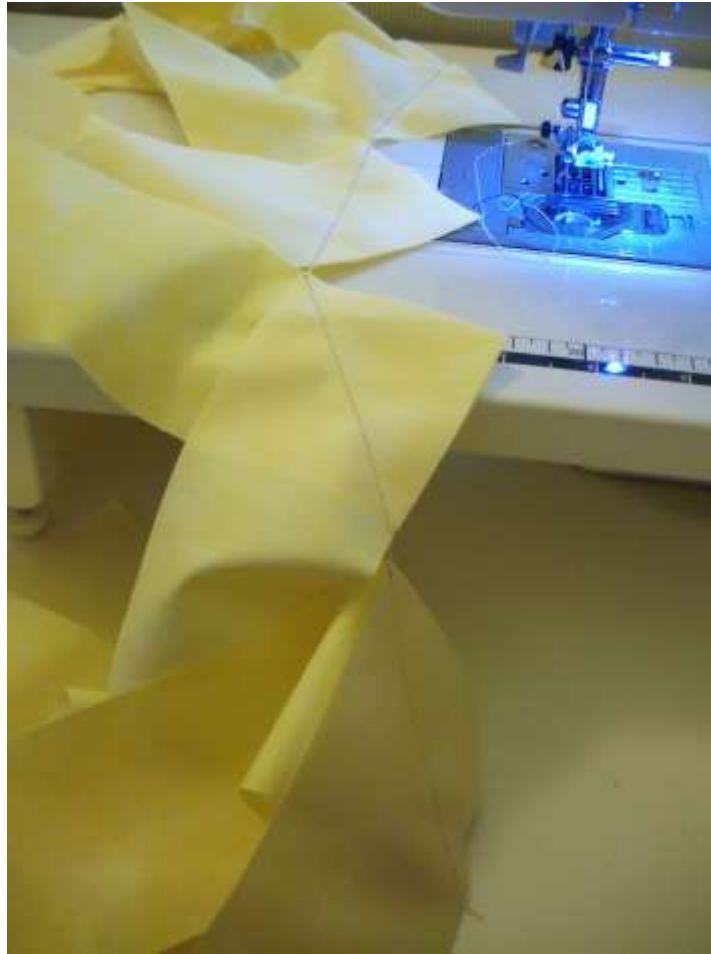
Line up the line and stitch just to the right side of the line. Do not back-stitch.



Find the end of the marked strip you just sewed. The right side becomes the unmarked strip in slide 8. Repeat steps 8 through 10 chain-piecing along the way.



The chain-pieced binding.



Clip the ends apart and trim off the extra fabric.



Press each seam open.



Press binding in half the entire length of the binding. (don't mind the ironing board.)



Pick one side of the quilt. Line up the raw edge of the binding with the raw edge of the quilt. Starting at about 12" from the end of the binding stitch along the raw edge.



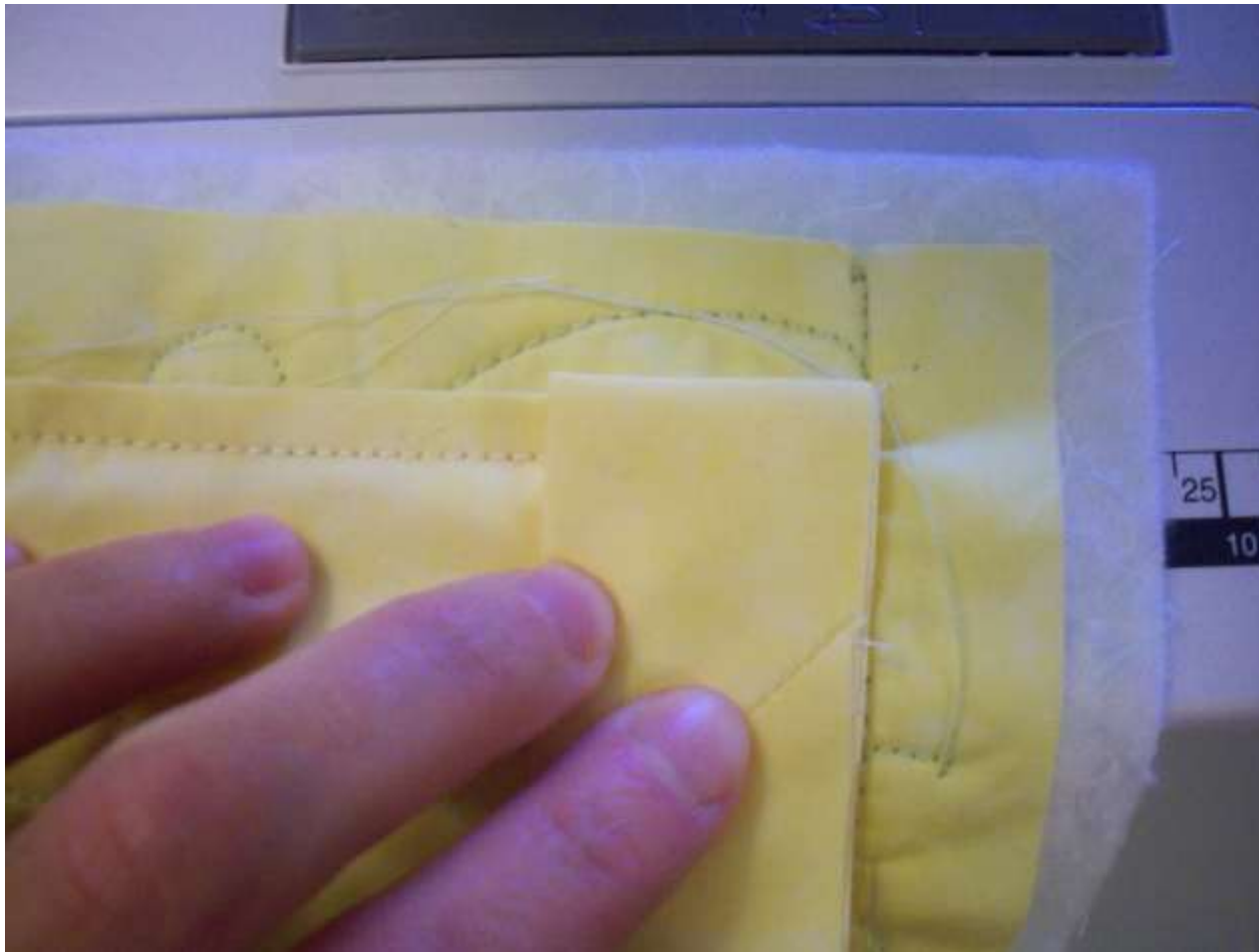
Stop when you get $\frac{1}{4}$ " from the edge of the quilt top. (my quilt top is the stitched line, not the edge of the fabric.)



Turn the quilt 90 degrees. Fold binding up to create a corner.



Fold down leaving a very small overhang and lining up the raw edge of the binding with the raw edge of the quilt. Repeat slides 17-18 for each corner.



When you get to the side of the quilt with the beginning of the binding end about 18" from your starting stitch line.



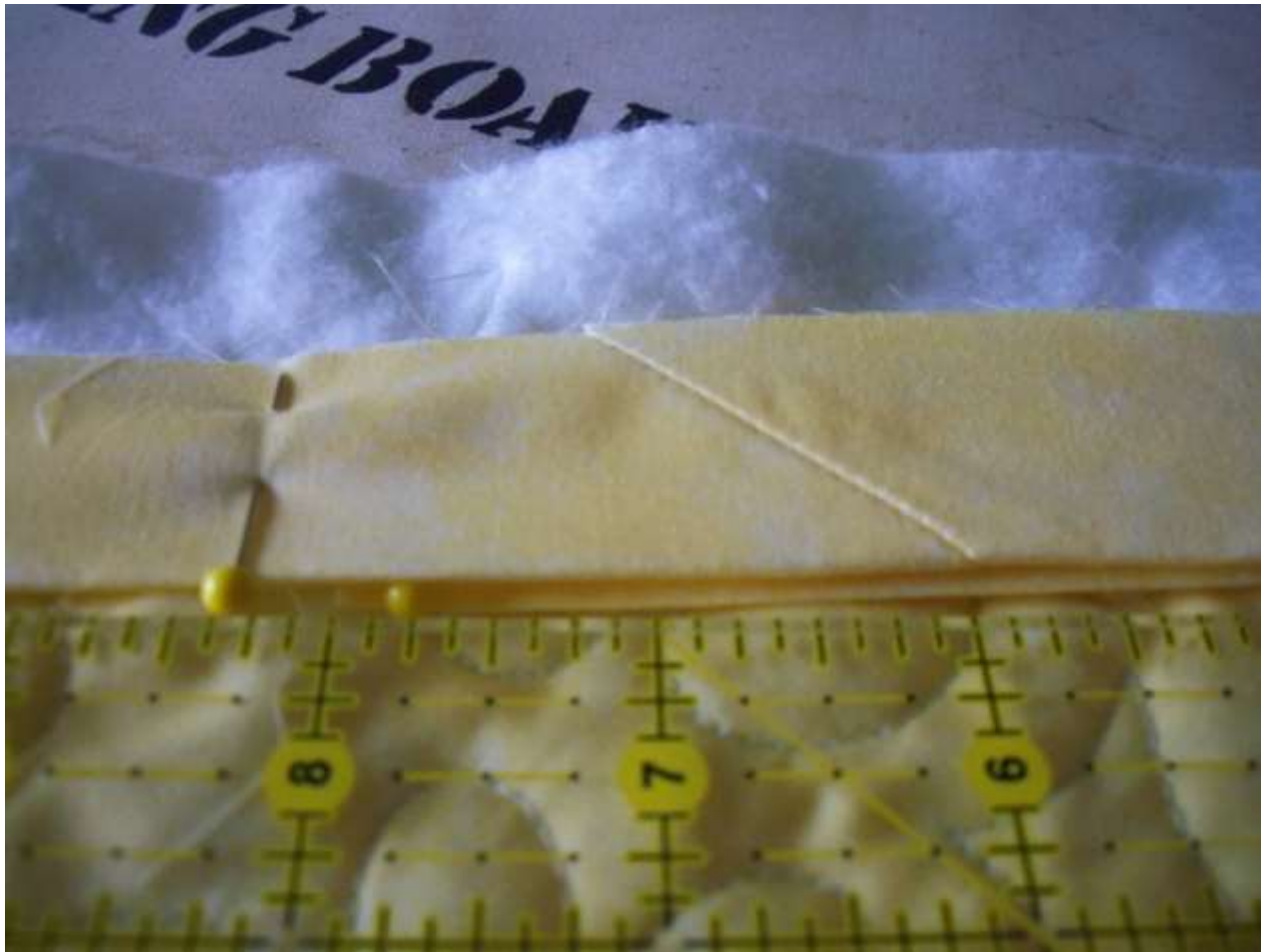
Pull the beginning of the binding taut and pin it down.
The end of the binding will lay on top of it.



Pull the end of the binding taut and
pin.



Line a 1" mark on ruler up with the beginning of the binding.



At 2 ½” from the beginning of the binding cut the end of the binding.



After the cut. The excess to the right can be stored or discarded for another project. Remove the pins.



Place the bulk of the quilt away from you. Open up the binding strip on the left side of the quilt.



Line the end of the strip with one of the right angles. Grab your ruler and carefully mark the 90 degree angle on the wrong side of the fabric.



It will look like this.



Back to your machine. The opposite end of the binding open up and place on bed of machine, right side up.



Line up the end with the marked line with the other end of the binding (refer to slide 9).



Stitch just to the right of the line (not ON the line).



Trim, press open, re-fold in half and press again.



Line up raw edges and start stitched from where you stopped to the point where you started.



Trim the quilt again, leaving 1/8" of batting and backing.



The whole top will look like this.



Anchor your needle and thread. Wrap the binding around to the back of the quilt.



Rock the needle back and forth through the binding, backing and batting making a running blind stitch.



Continue along the binding to the corner.



Trim the corner of the backing and batting.



Tuck the corner of the quilt up into the binding.



What it looks like on the front.



Stop stitching about ½” from the edge.



Fold the left of the binding back, then fold the top of the binding down.



Then fold the left side of the binding back over the top.



Put your needle up right in the corner.



Then do the running blind stitch through to the corner of the binding.



Then go back. Continue stitching and repeating slides 44-47 at each corner.



Questions? Comments?

You can find me at

www.heatherspencedesigns.com

or on Facebook.

